

# Mascot 40 H

Electro-hydraulic 2-post lift, 4.0 t capacity



## Application

- ☐ Repair and maintenance

## Approvals / recommendations

- ☐ Volvo

## Description:

### Posts:

- ☐ Asymmetric post installation, vehicles can be positioned far to the rear, for better door-opening angle
- ☐ Very stable bent posts
- ☐ Without base frame, therefore free drive-in situation
- ☐ One power pack with low power consumption
- ☐ Carriage with optimized sliding block bearing for low friction
- ☐ Double door-stop mounted on carriage
- ☐ Electrically operated safety ratchet system, no expensive compressed air required
- ☐ Pushbutton control unit with parking button and alarm signal
- ☐ Adjustable limit switch for top stop and CE-stop, as well as upper protection switch rail
- ☐ Mechanic synchronization via steel cables
- ☐ Post is height adjustable during installation

### Arms:

- ☐ Universal lifting area from small passenger car up to VW T6 long wheel base with lifting pad type „F“
- ☐ Possibility of parallel parking of arms for easier and faster positioning of vehicles
- ☐ Arms can be opened more than 180° for better drive-in situation for lifts installed in 90° angle to the drive lane
- ☐ Low minimum height

### Standard colours:

- ☐ Carriage and arms: RAL 3020 – red
- ☐ Posts: RAL 7016 – grey

## Versions:

- ☐ Available with different voltages
- ☐ Universal arm set for different cars
- ☐ DT = double telescopic arms

## Optional extras:

- ☐ Set of expansion bolts
- ☐ Column extension
- ☐ Conversion kit for 2nd lowering speed
- ☐ A large program of lifting pads
- ☐ Adaptor for AUTOPSTENHO pads
- ☐ Base plate enlargement for unfavorable soil conditions

**Special colours available on request!**



Scan the QR-Code  
for detailed product information.  
Further Information on  
[www.autopstenhoj.com](http://www.autopstenhoj.com)

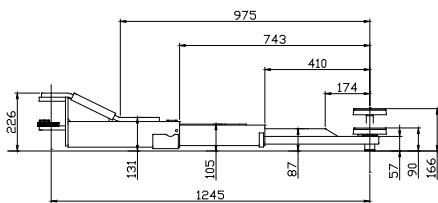
**AUTOPSTENHOJ GmbH**  
Sandkampstraße 90  
D-48432 Rheine  
☎ +49 5971 8602-02  
✉ [info@autopstenhoj.com](mailto:info@autopstenhoj.com)

**AUTOPSTENHOJ GmbH**  
Barrit Langgade 188-190  
DK-7150 Barrit  
☎ +45 76 82 13 30  
✉ [info@autopstenhoj.com](mailto:info@autopstenhoj.com)

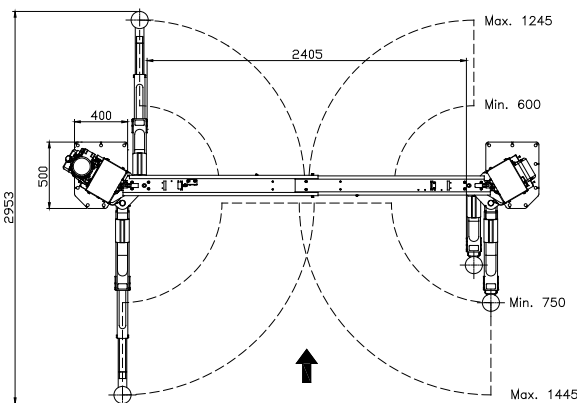
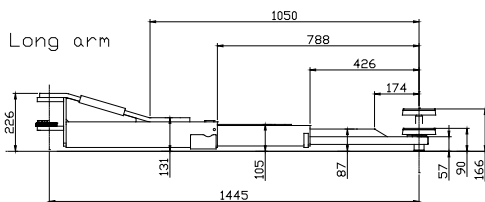
#### Technical data

Lifting capacity	4,000 kg
Lifting height	1,900 mm
Working height	1,990 – 2,066 mm
Lifting / lowering time	approx. 30 sec.
Motor	3.0 kW
Voltage	3x230 / 400 V-50 / 60Hz – 16 A

Short arm



Long arm



#### Arm superstructure

Lifting pad included in the delivery	F: 90 - 166 mm
Height of plug-in in superstructure	F: 57 mm
Min. height	F: 90 mm
Drive-through width	2,405 mm
Width between posts	2,740 mm
Total width - outer edges base plates	3,500 mm
Total height post	3,995 mm + 225 mm
Arm length front, min. - max.	F DT: 600 - 1,245 mm
Arm length rear, min. - max.	F DT: 750 - 1,445 mm

