

Maestro 4.50 F

Electro-mechanical 2x2-post lift, 5.0 t capacity



Application

- ☐ Repair and maintenance

Description:

Posts:

- ☐ Asymmetric post installation, vehicles can be positioned in rear area of work bay, for better door-opening angle
- ☐ Very stable bent posts
- ☐ Without base frame, therefore free drive-in situation
- ☐ Four strong electric motors
- ☐ Cold-rolled spindles for a long service life
- ☐ Nylon nut sets for high durability
- ☐ Long carriage with optimized mounting of 8 sliding blocks for low friction
- ☐ Carriage with threaded holes for easy adoption of diverse superstructures
- ☐ Door-stop mounted on carriage
- ☐ Obstruction system for stopping the lift when it hits an obstacle
- ☐ Pushbutton control unit with alarm signal
- ☐ Programmable limit switch for top stop and CE-stop
- ☐ Electronic synchronization through comparison of pulses measured on the pulleys

Arms:

- ☐ Universal lifting area from small passenger car up to VW T6 long wheel base with lifting pad type „F“
- ☐ Low minimum height

Standard colours:

- ☐ Carriage and arms: RAL 3020 – red
- ☐ Posts: RAL 7016 – grey

Versions:

- ☐ Double joint arms
- ☐ External arm locking system
- ☐ F = flex pad

Optional extras:

- ☐ Available with different portal heights, alternatively inground kit
- ☐ Set of expansion bolts
- ☐ LED-lighting set, flexible with spiral cable, fastening through magnets on posts or vehicle
- ☐ Large program of extra pads, depending on type of vehicle

Special colours available on request!



Scan the QR-Code
for detailed product information.

Further Information on
www.autopstenhoj.com

AUTOPSTENHOJ GmbH

Sandkampstraße 90
D-48432 Rheine

+49 5971 8602-02

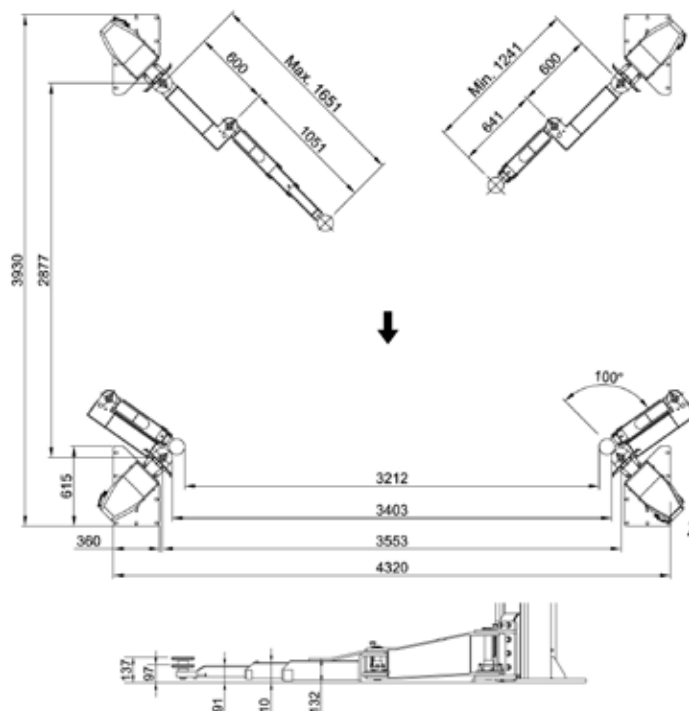
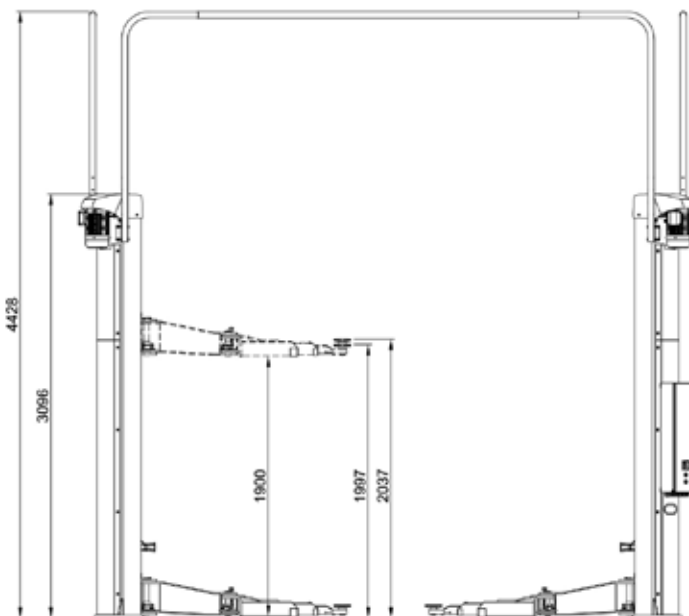
info@autopstenhoj.com

Technical data

Lifting capacity	5,000 kg
Lifting height	1,900 mm
Working height	1,995 – 2,035 m
Lifting / lowering time	approx. 35 sec.
Motor	4 x 3.6 kW
Voltage	3 x 230 / 400V – 50 Hz – 20 A

Arm superstructure

Lifting pad included in the delivery	F: 11027: 95 - 135 mm
Height of plug-in in superstructure	F Standard: 65 mm F Premium: 53 mm
Min. height	95 mm
Drive-through width	3,212 mm
Width between posts	3,553 mm
Total width - outer edges base plates	4,320 mm
Total height post	3,100 mm
Total height incl. portal	4,060 - 4,420 mm
Arm length, min. - max.	1,241 - 1,651 mm



Pushbutton control with alarm signal



Double joint arms



External arm locking system