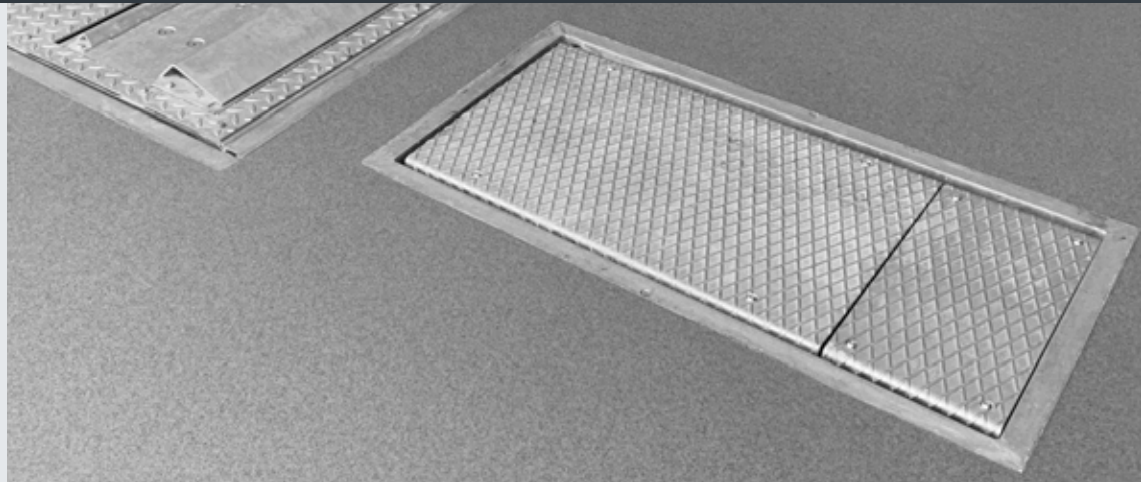
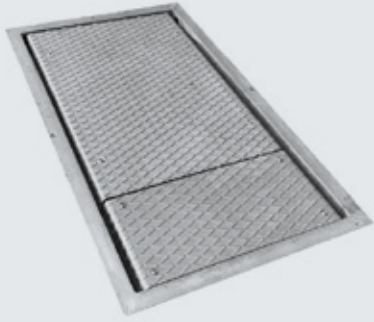


Testmaster SST

Side slip tester



Application

- Check-in
- Repair and maintenance
- Testing
- General inspection

Description:

- Fast track inspection by driving over a test plate
- Tension releas plate (only SST4 / SST6) eliminates tension in the chassis
- Ensures reliable track inspection
- Track behavior / deviations are displayed in mm/m
- Hot-dip galvanized track plates with a non-slip surface
- Stable ball bearing plate guide
- Electronic measuring system delivers the data to a clearly visible digital display
- Installation either on the floor with optional ramps or at floor level with an optional frame
- Easy installation, 240/110 V power connection

Versions:

- Track plate hot-dip galvanized
- Digital display with integrated electronic
- 15 m precabled between track plate and digital display

Options:

- Assembly set above ground
- Assembly set floor-even
- Base plate hot-dip galvanized
- Metal cable cover (short / long)
- Wall bracket
- Pedestal



Scan the QR-Code for detailed product information.

Further Information on www.autopstenhoj.com

AUTOPSTENHOJ GmbH

Sandkampstraße 90
D-48432 Rheine
☎ +49 5971 8602-02
✉ info@autopstenhoj.com

AUTOPSTENHOJ GmbH

Barrit Langgade 188-190
DK-7150 Barrit
☎ +45 76 82 13 30
✉ info@autopstenhoj.com

Side slip tester	
Dimension digital display (W x H x D) mm	700 x 320 x 60 mm
Electrical connection	240/110 V; 50/60 Hz
Fuse protection	16 A träge
Display range	0-19 mm/m
Dimensions test plate (L x W x H) mm	SST4: 750 x 500 50 SST6: 750 x 750 x50 SST15: 750 x 990 x50
Dimensions tension release plate (L x W x H) mm	SST4: 250 x 500 x 50 SST6: 250 x 750 x 50
Deflection	max.: +/- 20 mm
Axle load max.	SST4: 4.000 kg SST6: 6.000 kg SST15: 15.000 kg

