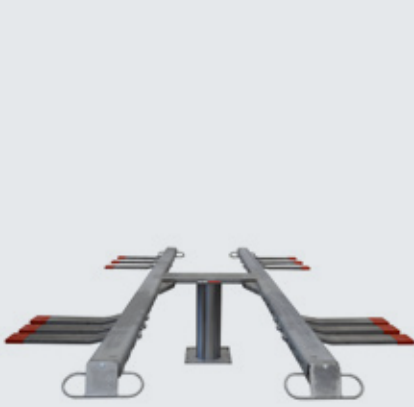


# Sololift 1.35 Fv Uni Ø 213

Electro-hydraulic single-ram lift, 3.5 t capacity, superstructure with lifting blades



## Application

- Check-in
- Wash
- Repairs and maintenance

## Approvals / recommendations

- Volkswagen Group

## Description:

### Steel cassette:

- Waterproof steel cassette
- Self-carrying

### Hydraulic unit:

- Hard-chrome plated cylinder
- High stability (Cyl. Ø213mm)
- Integrated anti-rotation device
- Corrosion-free guiding element
- Pump unit with immersed motor for fitting on wall
- Hydraulic oil
- Pneumatic emergency lowering
- Programmable pushbutton control unit
- Alarm signal / CE-stop

### Superstructure:

- Superstructure with lifting blades on floor
- Adaptation to various wheel bases by re-positioning of lifting blades
- Low minimum height

### Standard surface-treatment:

- Hot galvanized

## Versions:

### Steel cassette:

- Hot galvanized
- Coated

### Installation:

- Superstructure on floor
- Ceiling installation
- Hydraulic pump unit in floor
- Hydraulic pump unit on wall

## Optional extras:

- Extra lifting blades

**Zinc coating on request!**



Click the QR-Code for detailed product information.

Further Information on [www.autopstenhoj.com](http://www.autopstenhoj.com)

**AUTOPSTENHOJ GmbH**

Sandkampstraße 90

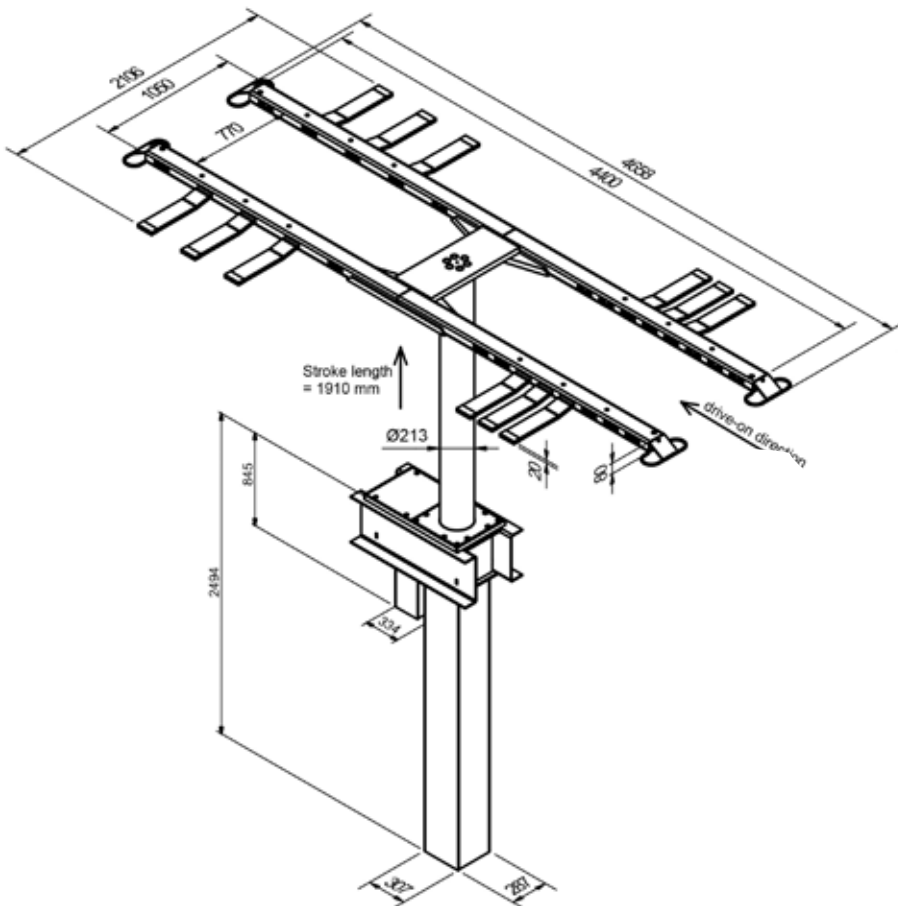
D-48432 Rheine

+49 5971 8602-02

info@autopstenhoj.com

Technical data	
Lifting capacity	3,500 kg
Lifting height	1,910 mm
Working height	1,930 mm
Cylinder diameter	213 mm
Lifting / lowering time (high pressure)	approx. 30 sec.
Foundation depth	2,650 mm
Motor	3 kW
Hydraulic oil	14 l
Voltage	230 / 400 V – 50 Hz –16 A

Fv Uni Superstructure	
Total length	4,658 mm
Wheel base, min. - max.	1,600 – 3,900 mm
Total width	1,050 / 2,106 mm
Min. height	20/80 mm



Hard-chrome plated cylinder



Cover



Fitting of lifting blades