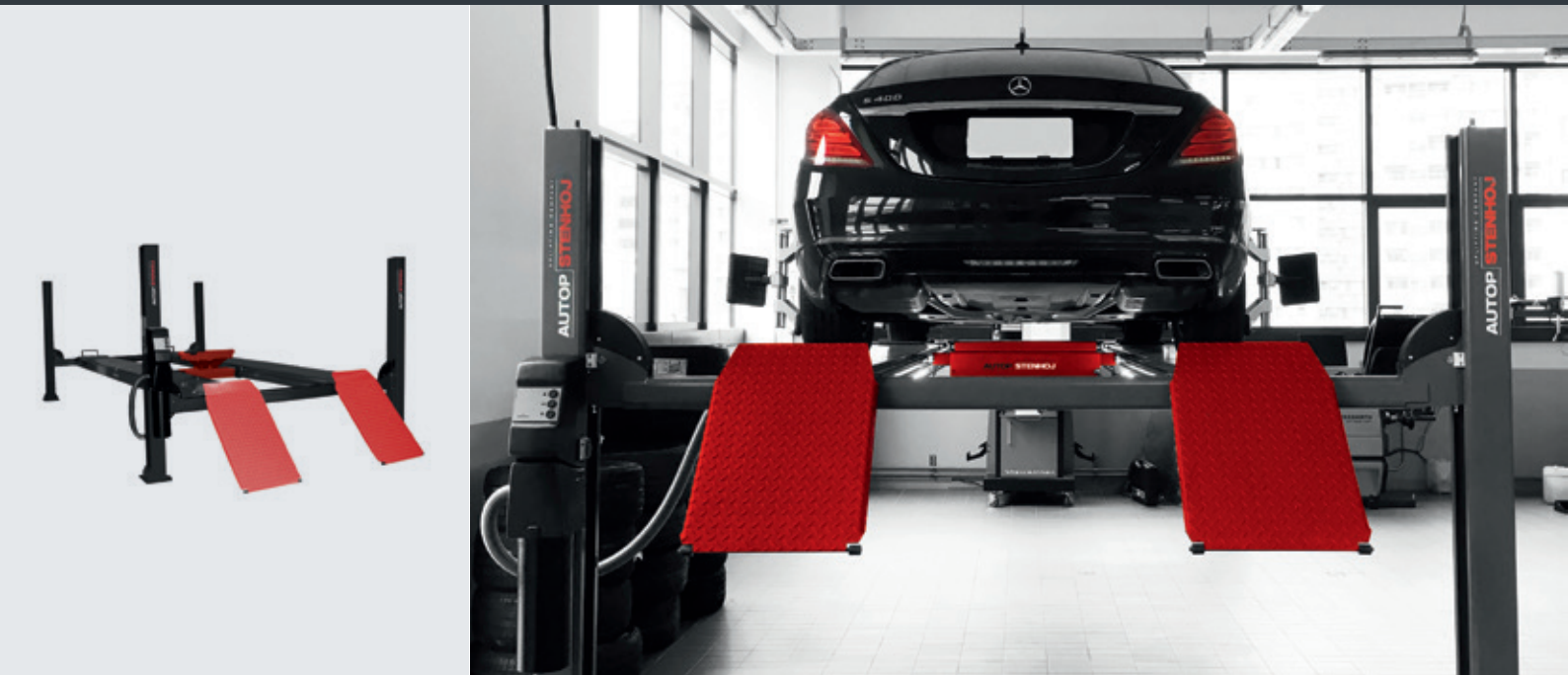


Major 5230

Electro-hydraulic 4-post lift, 5.2 t capacity



Application

- ☐ Check-in
- ☐ Repair and maintenance
- ☐ Wheel alignment
- ☐ Testing

Approvals / recommendations

- ☐ Renault

Description:

Posts:

- ☐ Integrated eccentric brake system
- ☐ Emergency stop valve
- ☐ Obstruction system
- ☐ Pneumatic parking system in height adjustable ratchets
- ☐ Pump unit with immersed motor and control unit on rear left post
- ☐ Pushbutton control unit with alarm signal
- ☐ Hydraulic cylinder under left platform
- ☐ Lifting and lowering by means of cables
- ☐ Emergency lowering valve

Platforms:

- ☐ One movable platform as standard
- ☐ Platforms prepared for AUTOPSTENHOJ scissor jack

Standard colours:

- ☐ Platforms & posts: RAL 7016 – grey
- ☐ Ramps: RAL 3020 – red

Versions:

- ☐ Available with different voltages
- ☐ Drive-on ramps and stops for surface-mounting, alternatively drive-over ramps for recessed installation
- ☐ S = flush platforms
- ☐ WL = with front recesses for turn tables and rear side slip plates, center cover plate between recesses and side slip plates
- ☐ G = galvanized platforms
- ☐ 42 = 4,200 mm platforms
- ☐ 47 = 4,700 mm platforms
- ☐ 51 = 5,100 mm platforms
- ☐ 55 = 5,500 mm platforms

Optional extras:

- ☐ Set of expansion bolts
- ☐ Extra control unit
- ☐ LED-lighting set
- ☐ Set of two cover plates for recesses
- ☐ Set of two 385 mm ramp extensions
- ☐ Set of two platform extensions (0.5 m)

Special colours available on request!



Scan the QR-Code
for detailed product information.

Further Information on
www.autopstenhoj.com

AUTOPSTENHOJ GmbH

Sandkampstraße 90

D-48432 Rheine

+49 5971 8602-02

info@autopstenhoj.com

Technical data	
Lifting capacity	5,200 kg
Lifting height	1,670 mm
Working height	1,860 mm
Lifting / lowering time	Standard: 32 / 26 sec. D: 16 / 26 sec.
Pump unit	Standard: 3 kW D: 2 x 3 kW
Voltage	3x230 / 400V – 50 Hz – 25 / 16 A

Platforms	
Total length	5,560 / 5,980 / 6,780 mm
Usable length of platform	4,680 / 5,100 / 5,500 mm
Wheel base, min. - max.	variable
Platform width Models: 5230-47 and 5230-51 Model: 5230-55	550 mm 630 mm
Distance between platforms	725 - 1,210 mm
Min. height	140 / 170 / 160 / 190 mm
Width between posts	3,000 mm
Total width - outer edges base plates	3,422 mm
Total height	2,233 mm

Also available as inspection lifts:

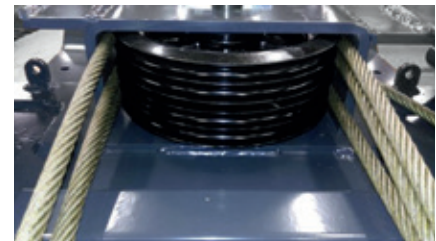
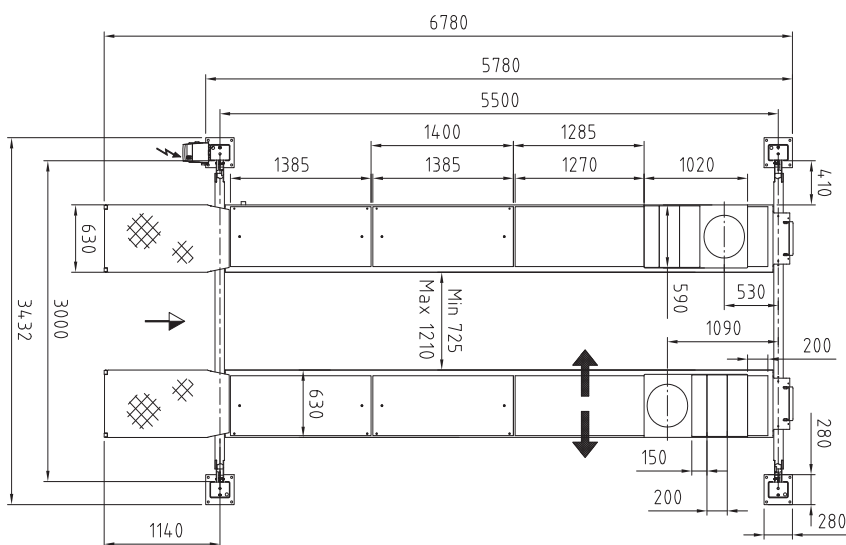
As standard equipped with re-inforced posts and larger cable diameter for intensive usage in inspection centres.

As standard delivered with:

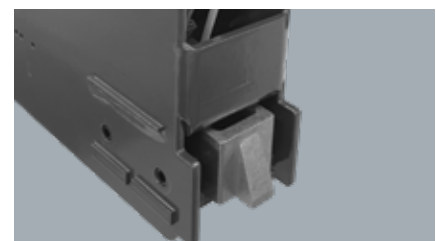
P = play detector (pneumatically operated for both lateral and rotational movement, for axle load up to 3 t), operation with wireless hand lamp

Option:

D = double pump unit for quicker lifting time. Control unit on front left post



Pulley with steel cable



Ratchet for parking position



Control unit and power pack on rear left post