

# Major 4026

Electro-hydraulic 4-post lift, 4 t capacity



## Application

- Check-in
- Repair and maintenance
- Wheel alignment
- Testing

## Description:

### Posts:

- Integrated eccentric brake system
- Emergency stop valve
- Obstruction system
- Pneumatic parking system in height adjustable ratchets
- Pump unit with immersed motor and control unit on rear left post
- Pushbutton control unit with alarm signal
- Hydraulic cylinder under left platform
- Lifting and lowering by means of cables
- Emergency lowering valve

### Platforms:

- One moveable platforms as standard
- Platforms prepared for AUTOPSTENHOJ scissor jack

### Standard colours:

- Platforms & posts: RAL 7016 – grey
- Ramps: RAL 3020 – red

## Versions:

- Available with different voltages
- Drive-on ramps and stops for surface-mounting, alternatively drive-over ramps for recessed installation
- S = flush platforms
- W = with front recesses for turn tables and rear side slip plates
- G = galvanized platforms
- 42 = 4,200 mm platforms
- 47 = 4,700 mm platforms
- 51 = 5,100 mm platforms

## Optional extras:

- Set of expansion bolts
- Extra control unit
- LED-lighting set
- Set of two cover plates for recesses
- Set of two 385 mm ramp extensions
- Set of two platform extensions (0.5 m)

**Special colours available on request!**



Scan the QR-Code for detailed product information.

Further Information on [www.autopstenhoj.com](http://www.autopstenhoj.com)

**AUTOPSTENHOJ GmbH**

Sandkampstraße 90  
D-48432 Rheine

+49 5971 8602-02

info@autopstenhoj.com

Technical data	
Lifting capacity	4,000 kg
Lifting height	1,670 mm
Working height	1,810 mm
Lifting / lowering time	Standard: 24 / 26 sec. D: 16 / 26 sec.
Pump unit	Standard: 3 kW D: 2 x 3 kW
Voltage	3x230 / 400V – 50 Hz - 25 / 16 A

Platforms	
Total length	5,060 / 5,560 mm
Usable length of platform	4,180 / 4,680 mm
Wheel base, min. - max.	variable
Platform width	500 mm
Distance between platforms	740 – 1,030 mm
Min. height	140 / 160 mm
Width between posts	2,600 mm
Total width - outer edges base plates	3,022 mm
Total height	2,233 mm

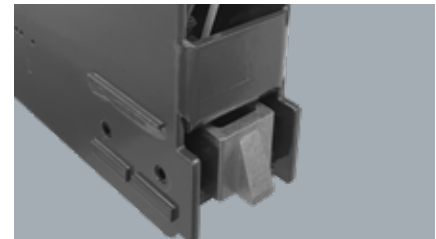
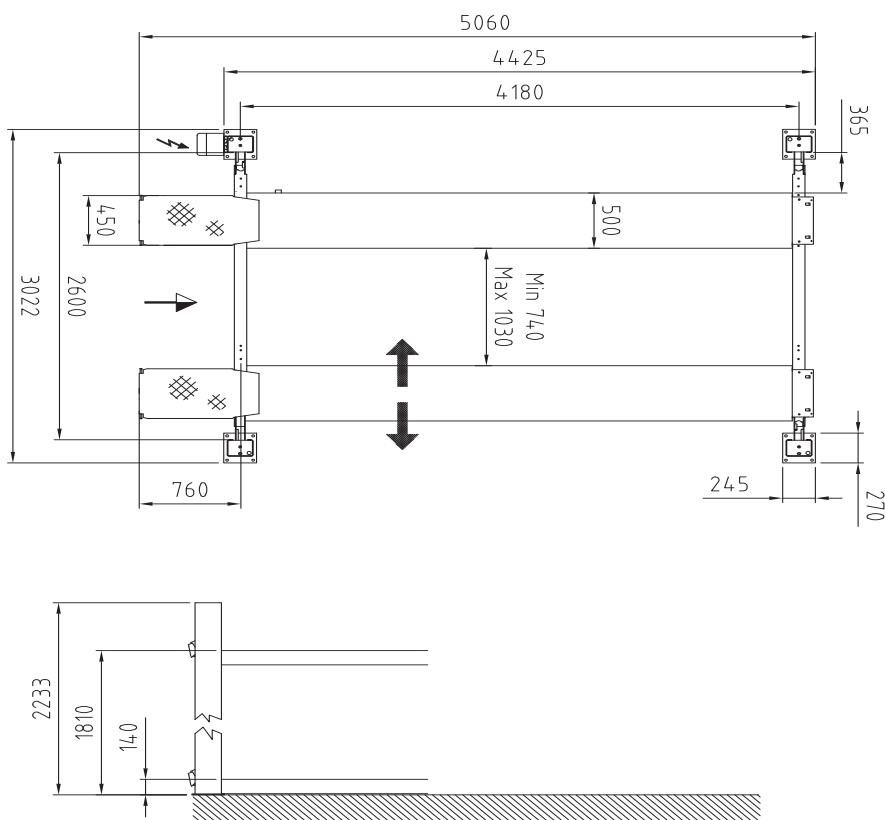
**Also available as inspection lifts:**

As standard equipped with re-inforced posts and larger cable diameter for intensive usage in inspection centres. As standard delivered with:

P = play detector (pneumatically operated for both lateral and rotational movement, for axle load up to 3 t), operation with wireless hand lamp

**Option:**

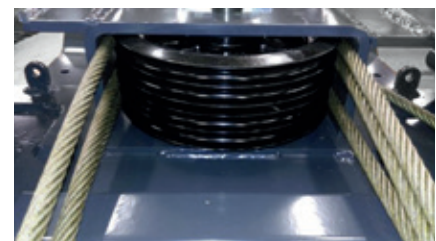
D = double pump unit for quicker lifting time. Control unit on front left post



Ratchet for parking position



Control unit and power pack on rear left post



Pulley with steel cable