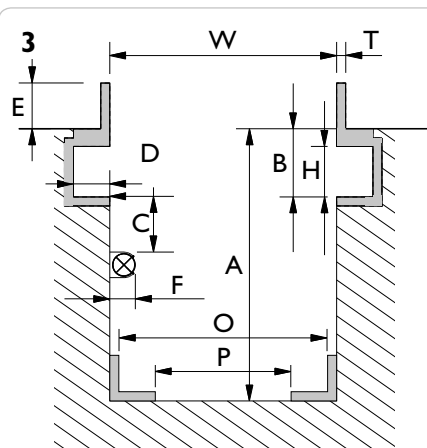
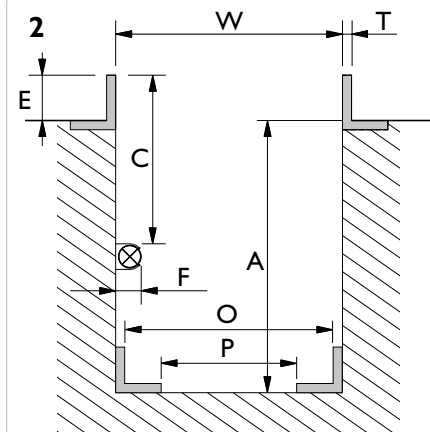
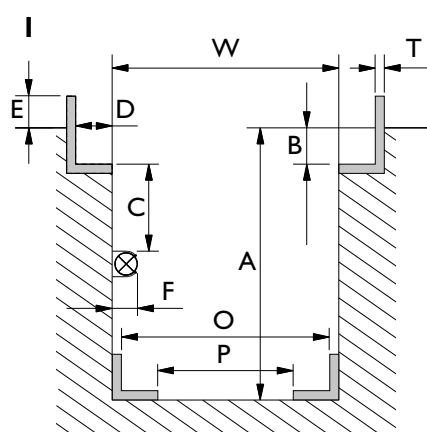


PIT SPECIFICATION FORM

GD - Pit jack	10 t	15 t	20 t	FL - Heavy duty jacking beam	6 t	12 t	16 t	20 t
GDT - Telescopic pit jack	15 t			SD - Jacking beam	2 t	2,6 t	3,2 t	4 t
GGD - Floor pit jack	15 t			ABT - Support bridge	20 t			
AB - Support bridge	20 t							



4 Drawing

Drawing no.: _____

Please measure various places along the length of the pit. **Max 12 mm variation between W min og W max. throughout the pit length**

W min. = _____ mm

W max. = _____ mm

A min. = _____ mm


B = _____ mm

D = _____ mm

E = _____ mm

H = _____ mm

T = _____ mm

If the pit is mounted with light  or other obstructing parts, please fill out C and F:

C min. = _____ mm

F max. = _____ mm

GGDI50S - Floor pit jack

O min. = _____ mm

O max. = _____ mm

P min. = _____ mm

P max. = _____ mm

Placing of saddle

The placing of top saddle **excluding** cross beam adaptor, safety stand and extensions is required:

above workshop floor _____ mm

levelling with workshop floor

below workshop floor _____ mm

The top of the cylinder will be positioned +/- 50 mm according to requested level

Option

Please note, mounting of different options will increase the min. height:

Cross beam T4-1 = + 100 mm

Cross beam T5-1 = + 95 mm

Cross beam T6-1 = + 55 mm

Cross beam T4-2 = + 145 mm

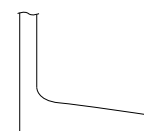
Cross beam T5-2 = + 140 mm

Cross beam T6-2 = + 90 mm

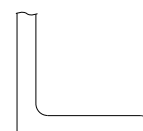
Safety stand S200 = + 65 mm

AS3 = + 100 mm

Rolltype / Rail profile



Conical/
tilted



Cylindrical/
straight

PLEASE NOTE: It is the customer's responsibility that the given measures are correct and sufficient and that the pit is built and anchored to withstand the designated loading.

Date:

Measured by:

Dealer:

Signature: