

UPLIFTING COMPANY

**AUTOP** **STENHOJ**

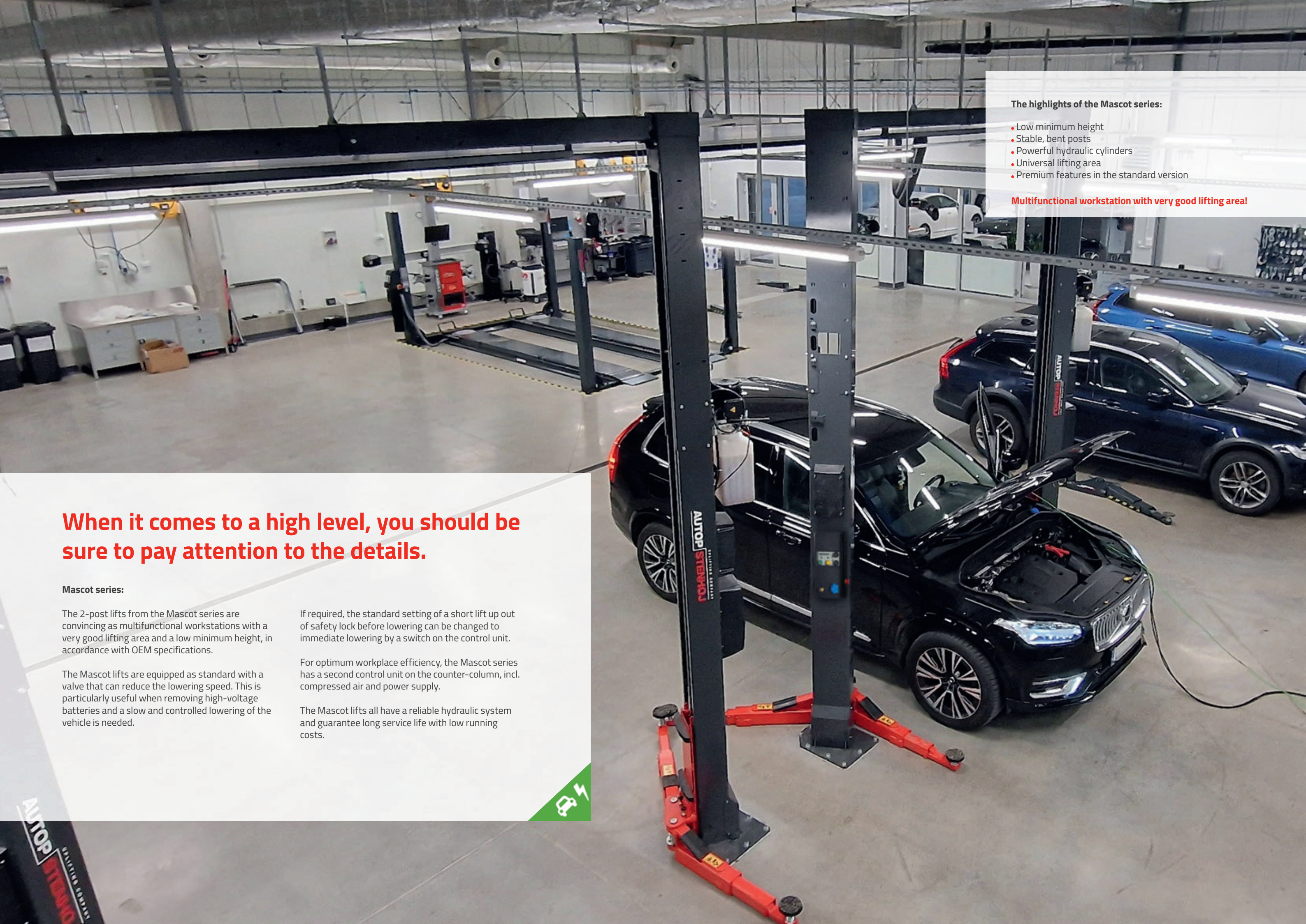
## Mascot 40H, 40HB, 55H

Electro-hydraulic 2-post lift  
with 4.0 & 5.5 t capacity

**VERTICAL  
POWER**

Surface-mounted lifts





#### The highlights of the Mascot series:

- Low minimum height
- Stable, bent posts
- Powerful hydraulic cylinders
- Universal lifting area
- Premium features in the standard version

**Multifunctional workstation with very good lifting area!**

## When it comes to a high level, you should be sure to pay attention to the details.

### Mascot series:

The 2-post lifts from the Mascot series are convincing as multifunctional workstations with a very good lifting area and a low minimum height, in accordance with OEM specifications.

The Mascot lifts are equipped as standard with a valve that can reduce the lowering speed. This is particularly useful when removing high-voltage batteries and a slow and controlled lowering of the vehicle is needed.

If required, the standard setting of a short lift up out of safety lock before lowering can be changed to immediate lowering by a switch on the control unit.

For optimum workplace efficiency, the Mascot series has a second control unit on the counter-column, incl. compressed air and power supply.

The Mascot lifts all have a reliable hydraulic system and guarantee long service life with low running costs.



AUTOPAC  
QUALITY SERVICE



## Mascot 40H, 40HB, 55H



## Technical data

	Mascot 40 H	Mascot 40 HB	Mascot 55 H
<b>Lifting capacity</b>	4000 kg	4000 kg	5500 kg
<b>Lifting height</b>	1900 mm	1900 mm	1900 mm
<b>Working height</b>	1999 - 2066 mm	1995 - 2071 mm	2000 - 2047 mm
<b>Lifting / lowering time</b>	~ 30 sec.	~ 30 sec.	~ 50 sec.
<b>Motor</b>	3 kW	3 kW	3 kW
<b>Voltage</b>	3x230 / 400 V-50 / 60Hz – 16 A	3x230 / 400 V-50 / 60Hz – 16 A	3x230 / 400 V-50 / 60Hz – 16 A

## Arm superstructure

<b>Adjustment range of lifing pads</b>	F: 90 - 166 mm	F: 95 - 171 mm	F: 100 - 147 mm
<b>Min. height</b>	90 mm	95 mm	100 mm
<b>Drive-through width</b>	2405 mm	2512 mm	2784 mm
<b>Width between posts</b>	2740 mm	2780 mm	3317 mm
<b>Total width outer edge base plates</b>	3500 mm	3500 mm	3832 mm
<b>Total height post</b>	3995 + 225 mm	2841   3430 mm	4015 mm
<b>Arm length front, min. - max.</b>	F DT: 600 - 1245 mm	F DT: 600 - 1250 mm	F DT: 915 - 1850 mm
<b>Arm length rear, min. - max.</b>	F DT: 750 - 1445 mm	F DT: 600 - 1250 mm	F DT: 915 - 1850 mm

## Mascot 40H, 40HB, 55H



## Electro-hydraulic 2-post lift with 4.0 & 5.5 t capacity

**Standard colour:**

- Arms: RAL 3020
- Posts: RAL 7016

**Optional extras:**

- Available with different portal heights
- LED lighting
- Set of expansion bolts
- Base plate extension for poor ground conditions
- Large program of extra pads, depending on type of vehicle

**Standard:**

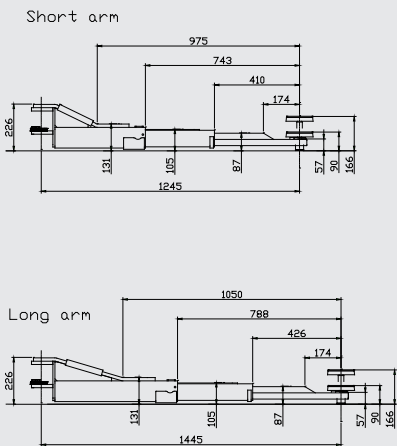
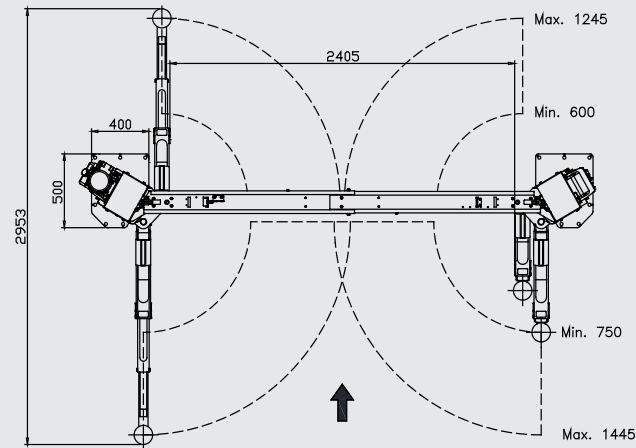
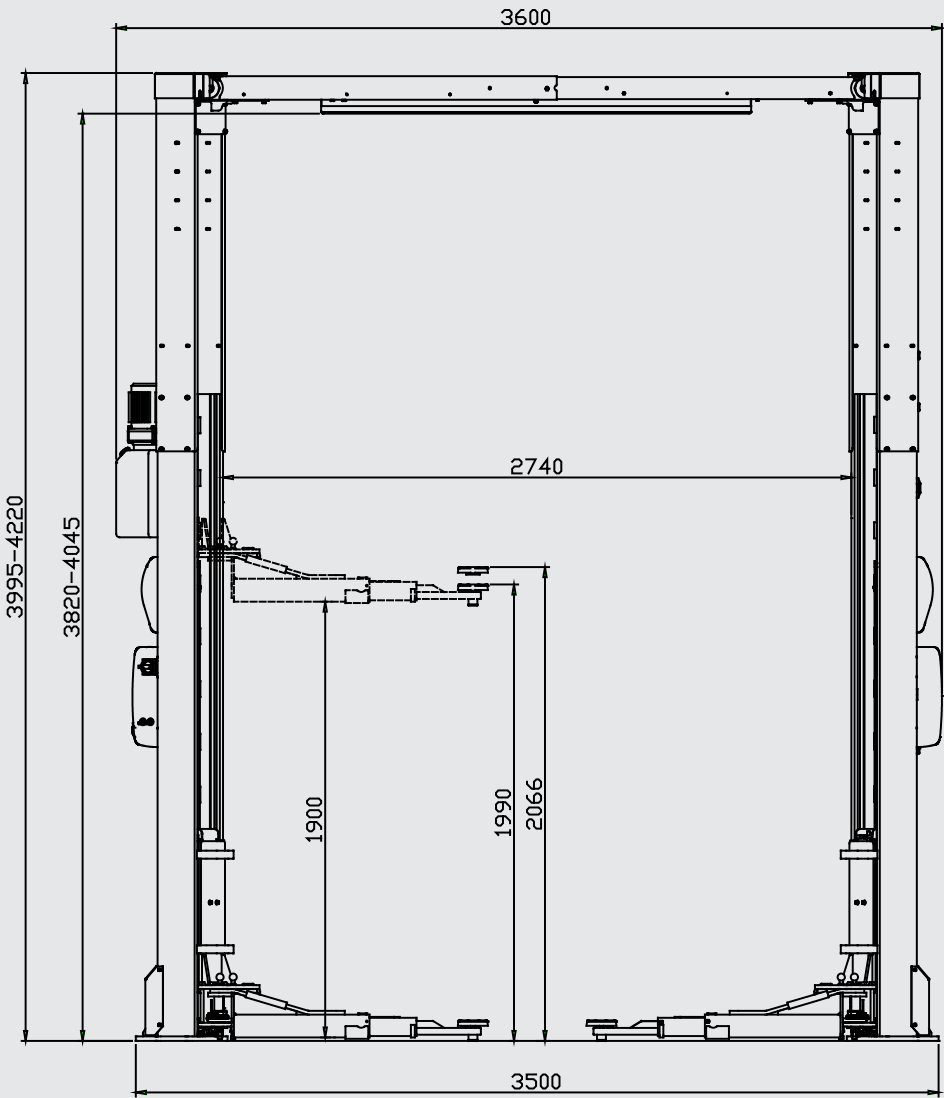
- Control unit on both columns
- Control units with integrated compressed air and electrical connection
- Switch for slow lowering
- Switch for direct lowering, without lifting from the latch



# Mascot 40 H

AUTOP STENHOJ

Electro-hydraulic 2-post lift with 4 t capacity

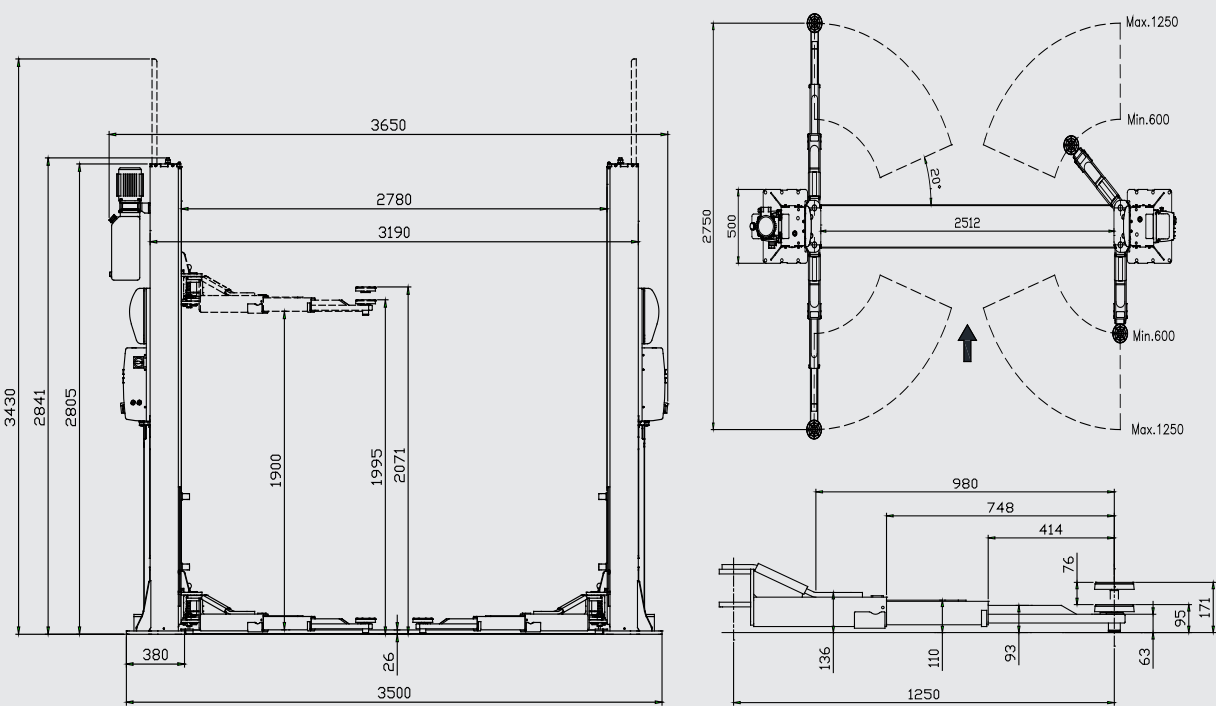


Illustrations are not binding and optional. Under reserve of dimensional, constructional and technical modifications! Validity 01/2025.

# Mascot 40 HB

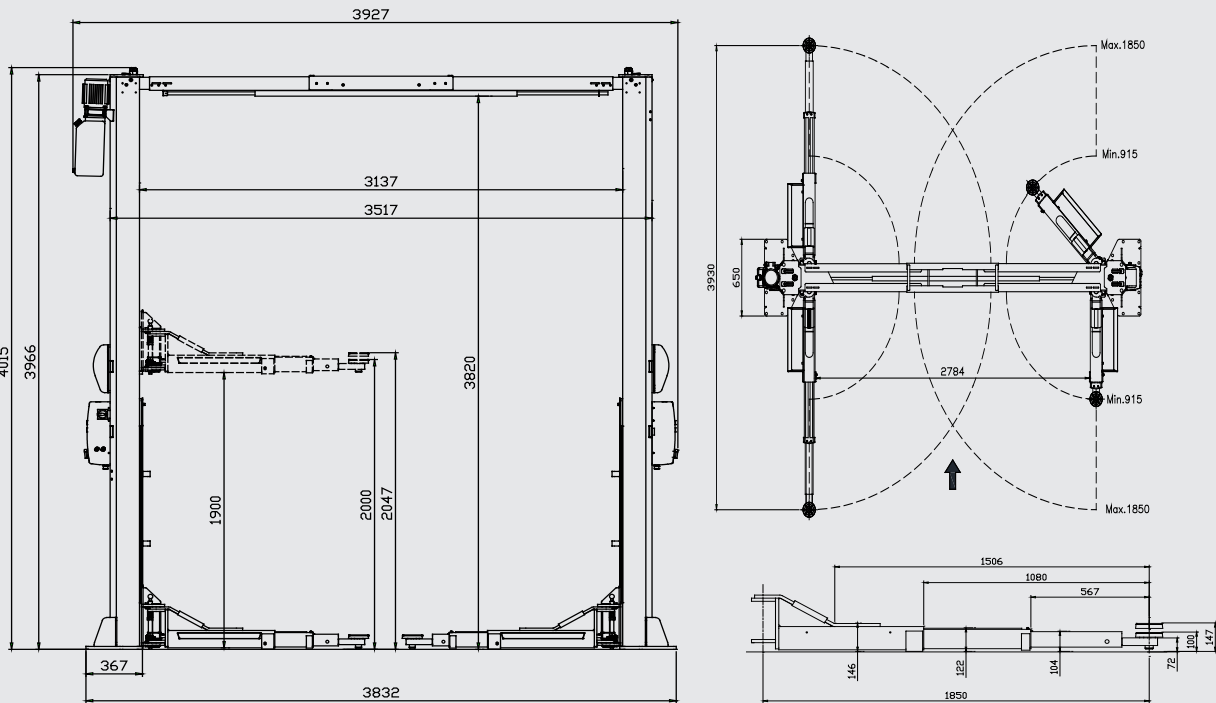
AUTOP STENHOJ

Electro-hydraulic 2-post lift with 4 t capacity



# Mascot 55 H

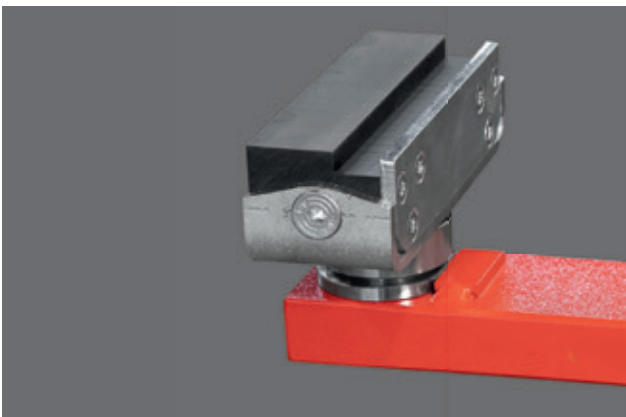
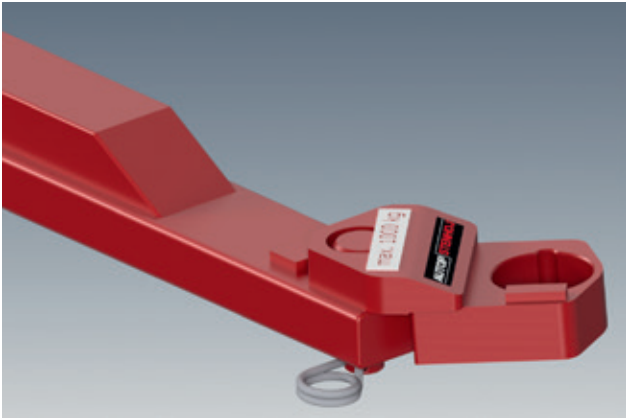
Electro-hydraulic 2-post lift with 5.5 t capacity



Illustrations are not binding and optional. Under reserve of dimensional, constructional and technical modifications! Validity 01/2025.

# Mascot 40H, 40HB, 55H

**AUTOP** UPLIFTING COMPANY  
**STENHOJ**



[www.autopstenhoj.com](http://www.autopstenhoj.com)

**AUTOPSTENHOJ GmbH**  
Sandkampstr. 90 | 48432 Rheine  
☎ +49 5971 8602-02  
✉ [info@autopstenhoj.com](mailto:info@autopstenhoj.com)